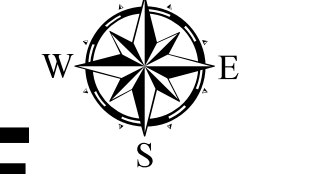




Map Scale

1:50,000

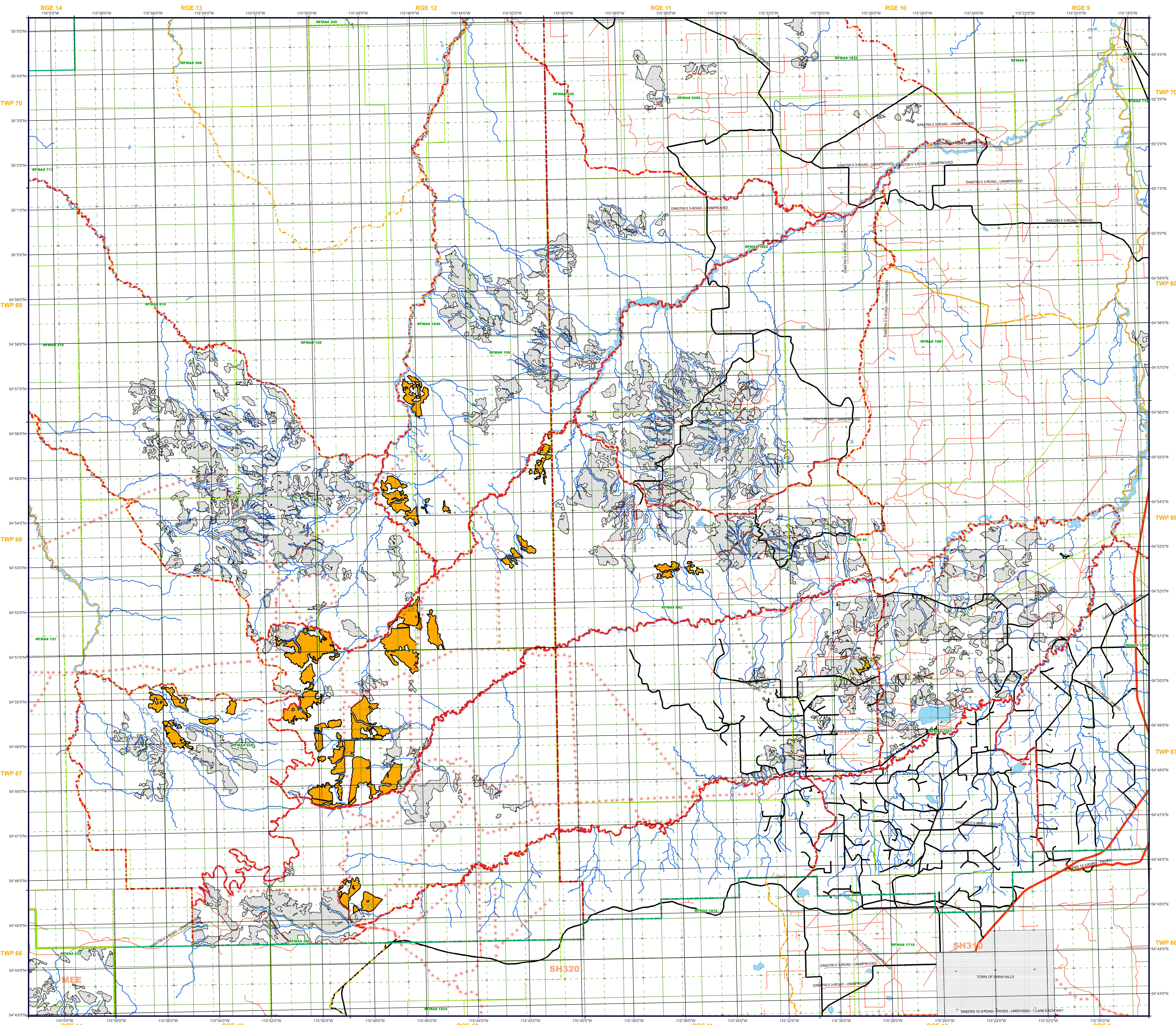


PUBLIC OPEN HOUSE 2021/2022 AOP

Harvesting Activities Map

Slave Lake Pulp
S20 South

Map Legend	
Boundaries	ATS
Active Licenses	Township
CITY BOUNDARIES	Section Line
MWFP FMA	Quarter Section
Other FMAs	HAMLETS
MWFP FMU	
Other FMUs	
Planning Unit	
Traps	
Trapslines	
Roads	
Railway	
Paved	
Gravel	
Unimproved	
2021 AOP Blocks	
LFN	
Site Prep	
Plant	
PCT	
COMH	
Survey Regeneration	
Herbicide Assessments	
Cutline	
Truck Trail	
Klondike Trail	
Recreational Trail	
Snowmobile Trail	
Trapper Trail	
Water	
Permanent Lake/River	
Intermittent Lake	
Lagoon / Dugout	
Island	
Permanent Stream	
Transitional Stream	
Intermittent Stream	
Ephemeral Stream	
Canal / Ditch	
Dam	



DATA DISCLAIMER
 This product is for information purposes and was not prepared for, nor is it suitable for, legal, engineering, or surveying purposes. Users of this information should review or consult the primary data and information sources to ascertain the usability of the information.

Map Produced by Millar Western Forest Products Ltd.
 Date Printed: Tuesday, April 20, 2021
 User Name: CYLABREC
 This map is based on current information at time of printing and is a guide only. No warranty is made for the completeness or accuracy of the information on this map.

Map Sources: Resource Data (Databases/Environment Canada, Millar Western Forest Products Ltd., Forest Canada, etc.)
 Copyright 2021 Millar Western Forest Products Ltd.
 All rights reserved. No part of this publication may be reproduced, stored in a retrieval system, or transmitted in any form or by any means, electronic, mechanical, photocopying, recording, or by any information storage and retrieval system, without permission in writing from Millar Western Forest Products Ltd. 500-52 St. Whistler, Alberta, Canada, T7E 1A2
 Phone: (780) 922-2222

