

Harvest Information Map



Operating Area	Block #	Disposition	Total Block Area	Road Area (in Block)	% of Block	Block Volume (m ³)		
						Total	Deciduous	Conifer
NJW	10		93	4.80	5.14			

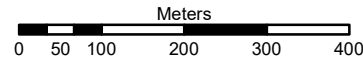
Area Supervisor:

Contractor:

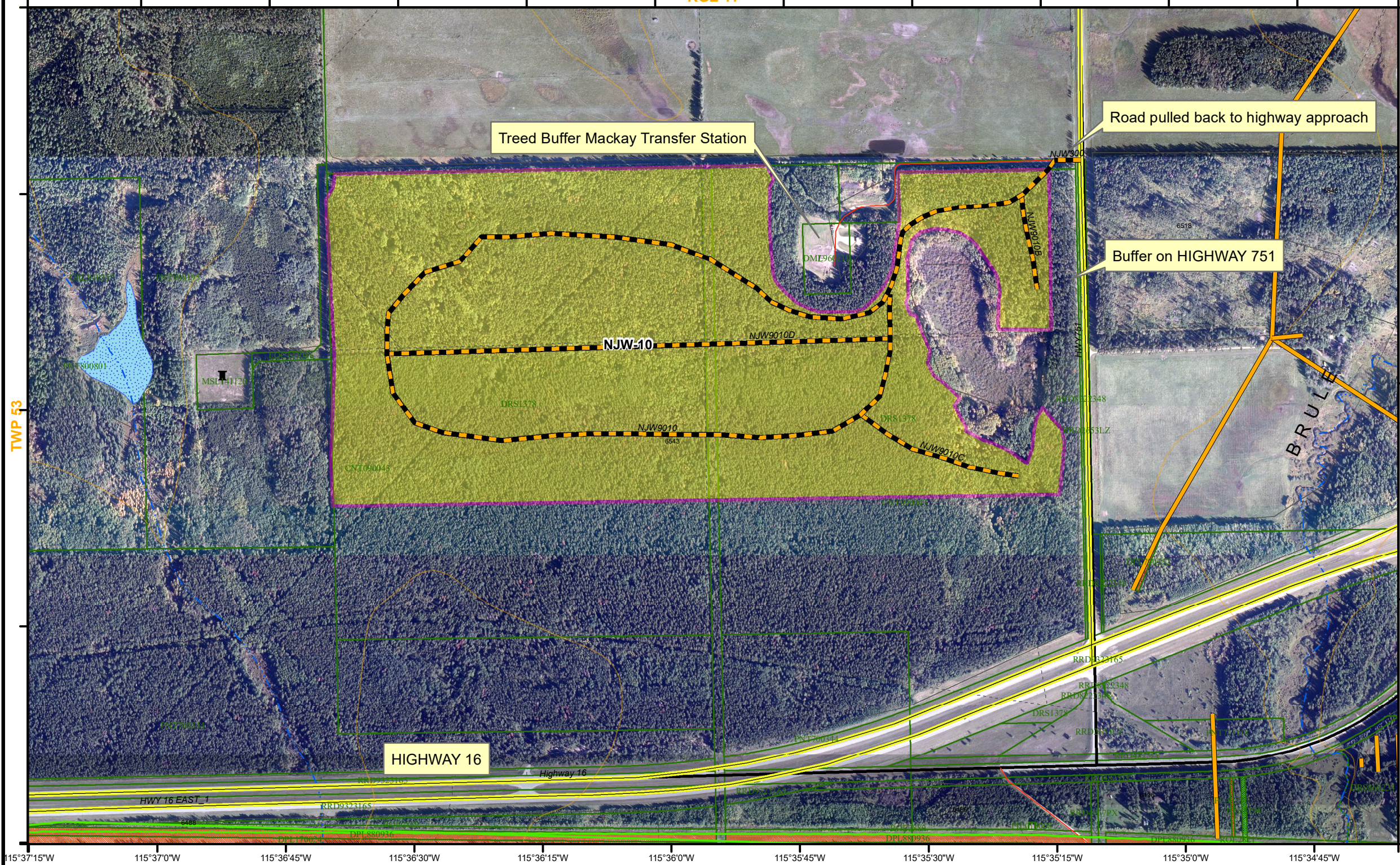
1:9,159
(Scale for 11x17 page)



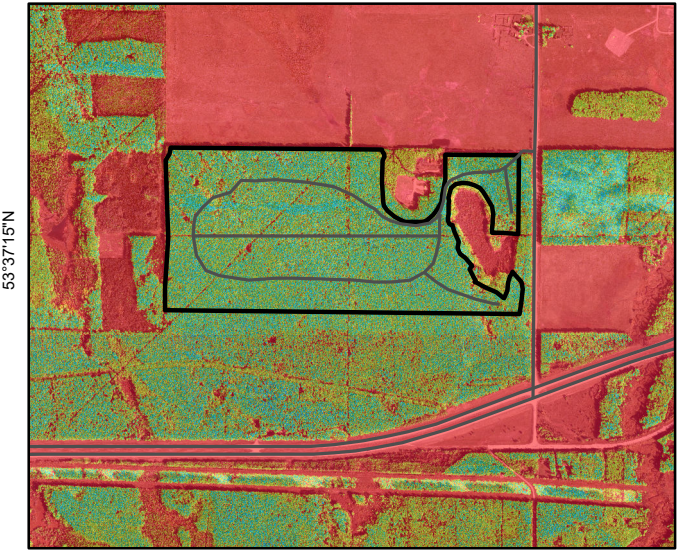
Map Centre: 54.948534 -115.673548



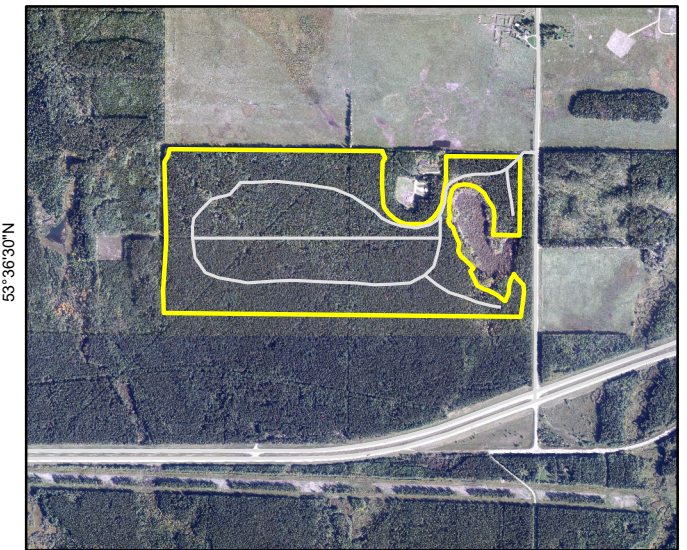
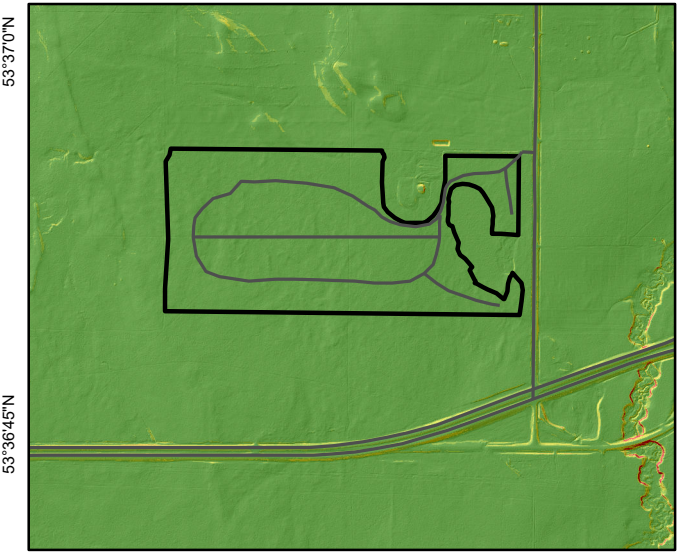
RGE 11



Tree Heights: 0-2m, 2-5m, 5-8m, 8-12m, 12-15m, 15-18m, 18-22m, 22-25m, 25-30m, 30+m



Terrain Slope: 0-10%, 10-20%, 20-30%, 30-40%, 40%+



Ensure Safe Work Practices, Work Instructions (WOI), Standard Operating Procedures (SOP), and Woodlands Operating Guidelines (WOG) are followed at all times. PLEASE WORK SAFELY!

Regional	AbaData	Crossings	Road Structures	Values	Road Status	Misc. Lines	Water	Block Stage	Buffers
Selected Block	Facilities	Ice Bridge	Barbed Wire Fence	Barred Owl	Proposed	Railway	Permanent Lake/River	Mixedwood Cutblock	Watercourse
Traplines	Wells	Native Timber Bridge	Buried Cable	Cabin	Laid Out	Cutline	Intermittent Lake	Deciduous Cutblock	Other Buffers
Protected Areas	Low Pressure Pipeline	Steel Bridge	Cattle Guard	Den	Active	Truck Trail	Lagoon / Dugout	Coniferous Cutblock	
Wildlife Biodiversity Zone	H2S Pipelines	Other	Gate	Insects	Erosion Control	Klondike Trail	Island	Old/Previously Harvested Cutblock	Other Dispositions
PSP Buffer	All Pipelines	Small Diameter Culvert	Powerline	Mineral Lick	Access Control	Recreational Trail	Permanent Stream	Inventory Block	EZE - Powerline
Contours	Provincial Roads	Large Diameter Culvert	Pipeline	Nest	Reclaimed	Snowmobile Trail	Transitional Stream		PLA - Pipeline
		Log/Snowfill	Trail	Wildlife	Deactivated	Trapper Trail	Intermittent Stream		
			Railway		Reclaimed w/ATV Access		Ephemeral Stream		
							Canal / Ditch		
							Dam		